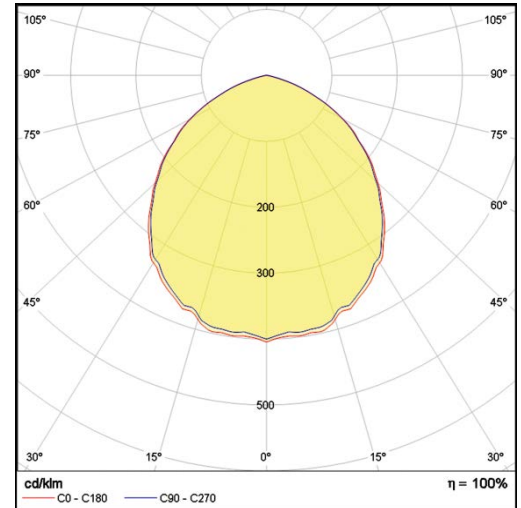
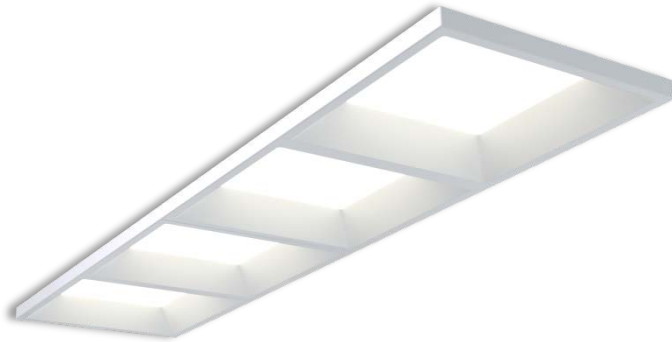


LC Recessed Style



LP-PVC30X120-144 DALI 830

Art. No 510331047

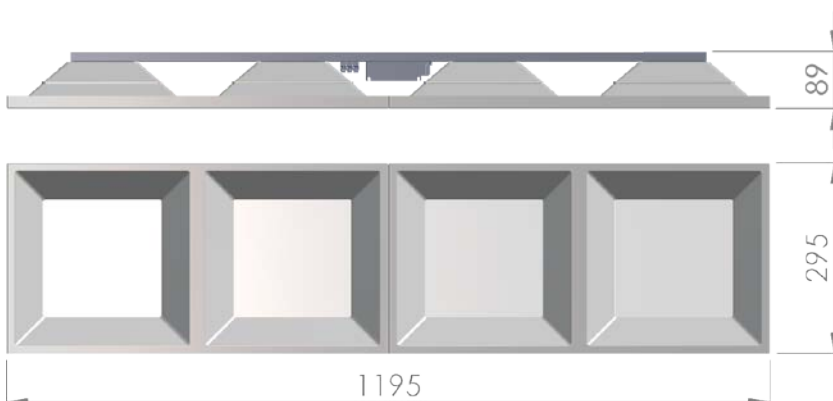


Luminous flux	4540 lm
Luminaire efficiency	117 lm/W
CRI	> 80
Correlated colour temperature	3000 K
Rated power	39 W
LED	Samsung LM561B
Dimmable	YES - to 1%
Input current	0.169 A
Working voltage	AC 220-240 V
Ingress protection code	IP20
Mech. impact protection code	-
Working temperature	-20 to +40°C

Service life	100 000 hours at 80% luminous flux
Housing	Polyvinyl chloride
Diffuser	PMMA
Installation	Recessed in modular ceilings with visible grid system 300x1200
Dimensions – LxWxH	1195x295x89 mm
Weight	2 kg
Mark	CE, RoHS
Origin	EU
Manufacturer	Solar LED Power Ltd.



Dimensional drawing:



Solar LED Power Ltd. is constantly developing and improving its products. The right is reserved to change specifications without prior notification.